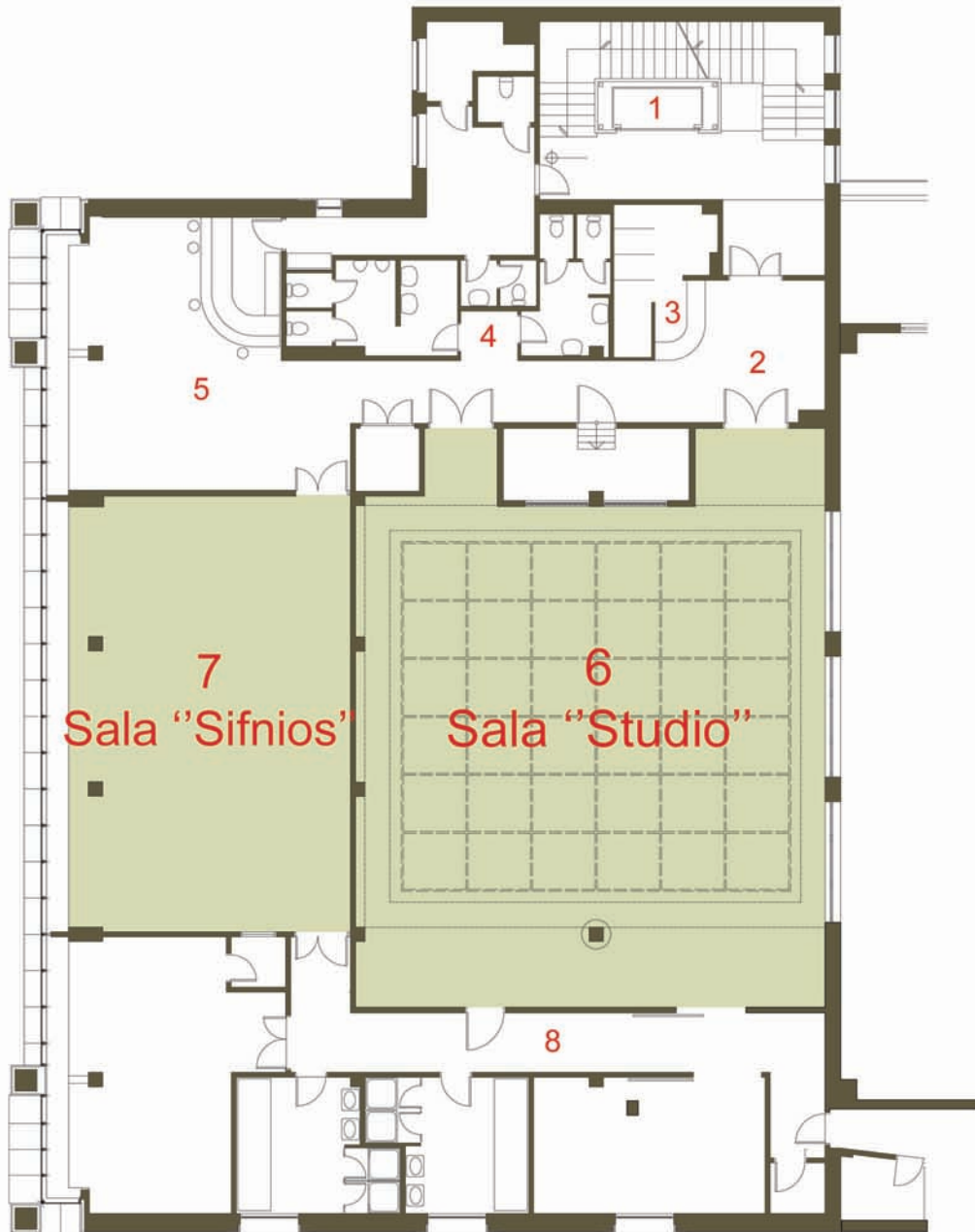


SALA "STUDIO" i SALA "SIFNIOS" (II SPRAT)



1. LIFT
2. ULAZNI LOBI
3. GARDEROBA
4. TOALETI
5. BIFE
6. SALA "STUDIO" (1255 cm x 1365 cm)
7. SALA "SIFNIOS" (1150 cm x 670 cm)
8. BLOK TEHNIKE I ANSAMBLA